



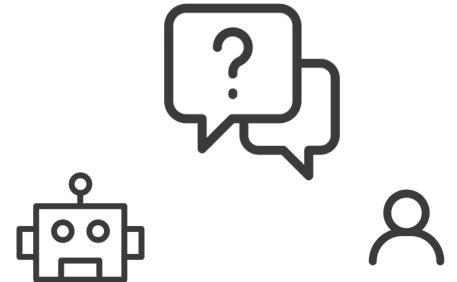
Evaluation III: Controlled Experiments

EN. 601.792.01

Ziang Xiao

Department of Computer Science

Spring 2024



Controlled Experiments

Controlled Experiments



All other variables controlled!

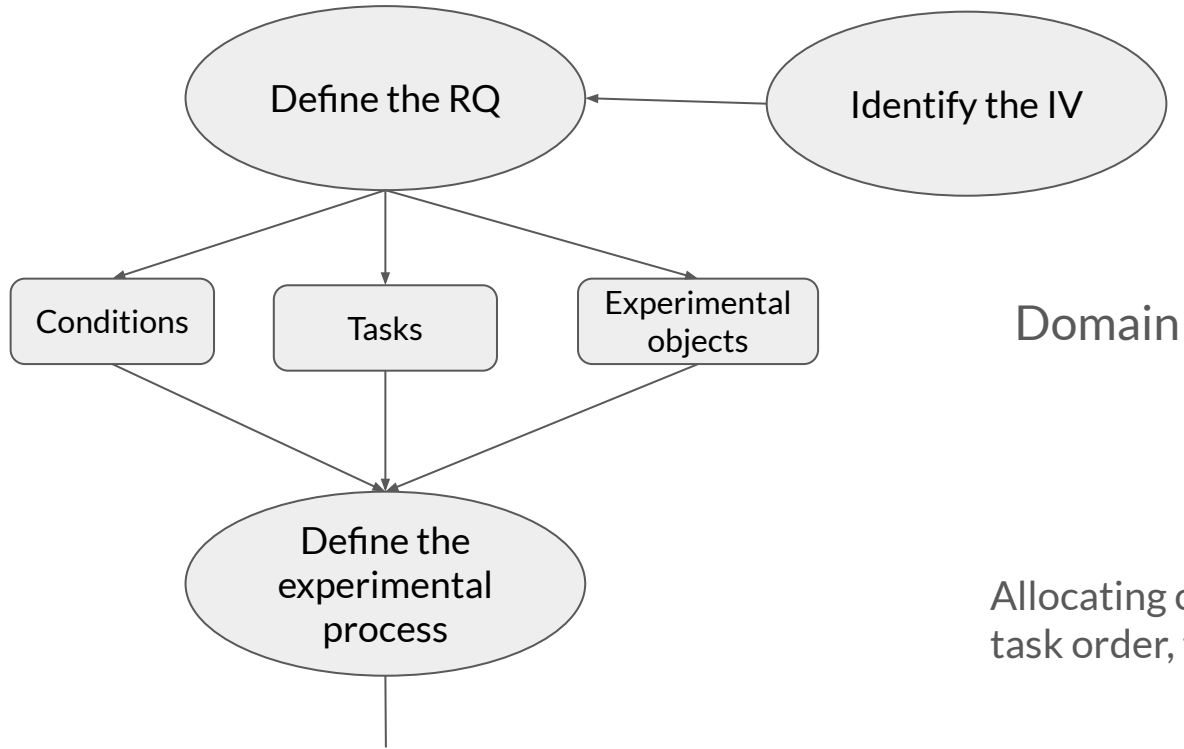
Benefits?

- Isolation of variables
- Causality determination
- Reproducibility and reliability

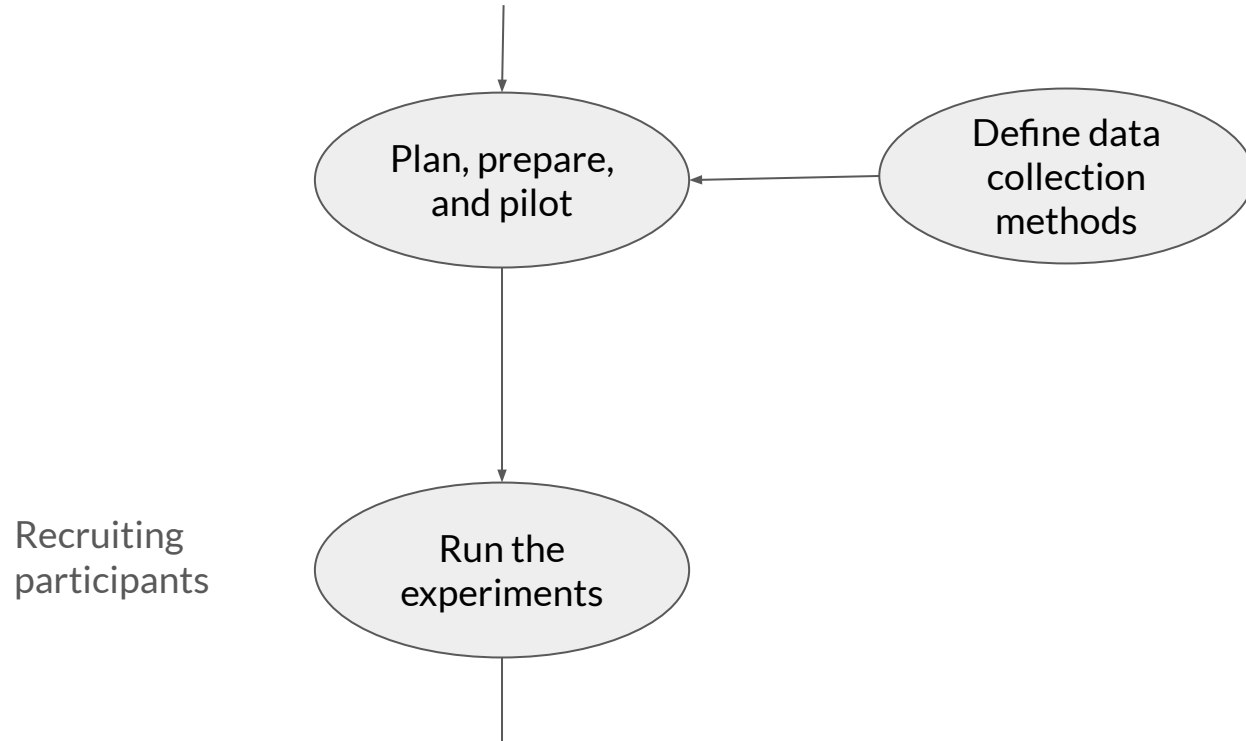
Issues?

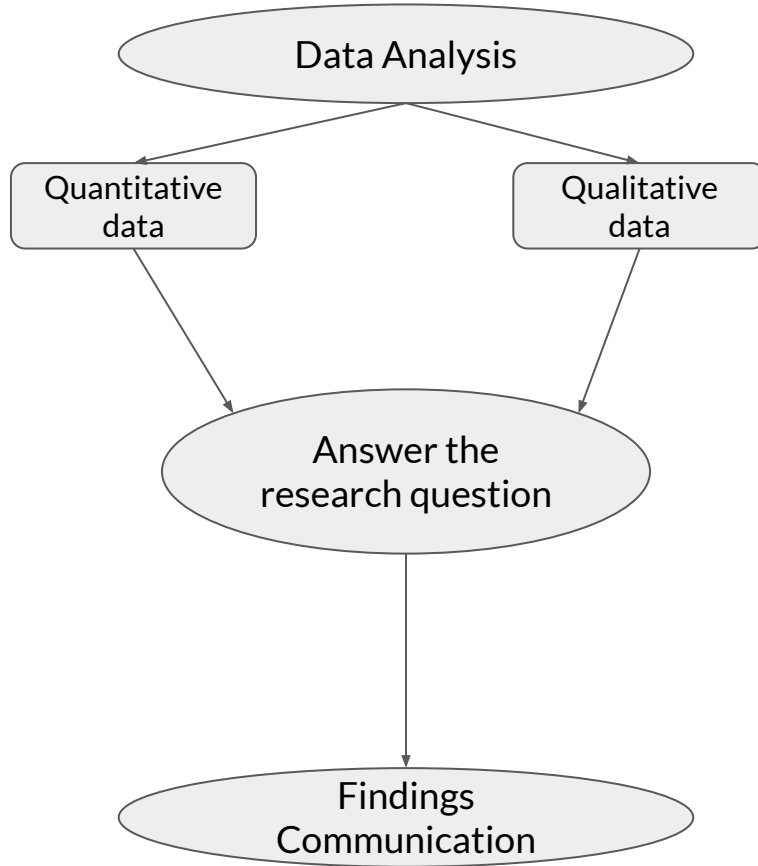
- Expensive
- Limited Ecological Validity
- Scope of Findings

Procedure



Allocating conditions,
task order, timing, etc.





Confounding factors,
demographics, triangulate

Separate fact and opinion,
acknowledge limitations,
identify audiences

Confounding Factors

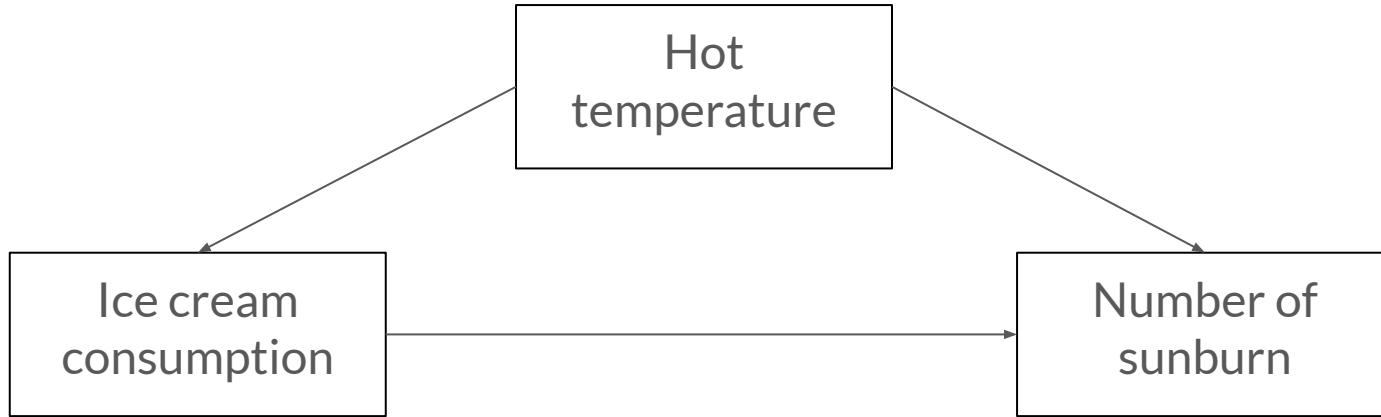
Variables that can influence **both** the IV and the DV, thus potentially skewing the evaluation outcomes.

Confounding Factors



Ice cream causes sunburn?

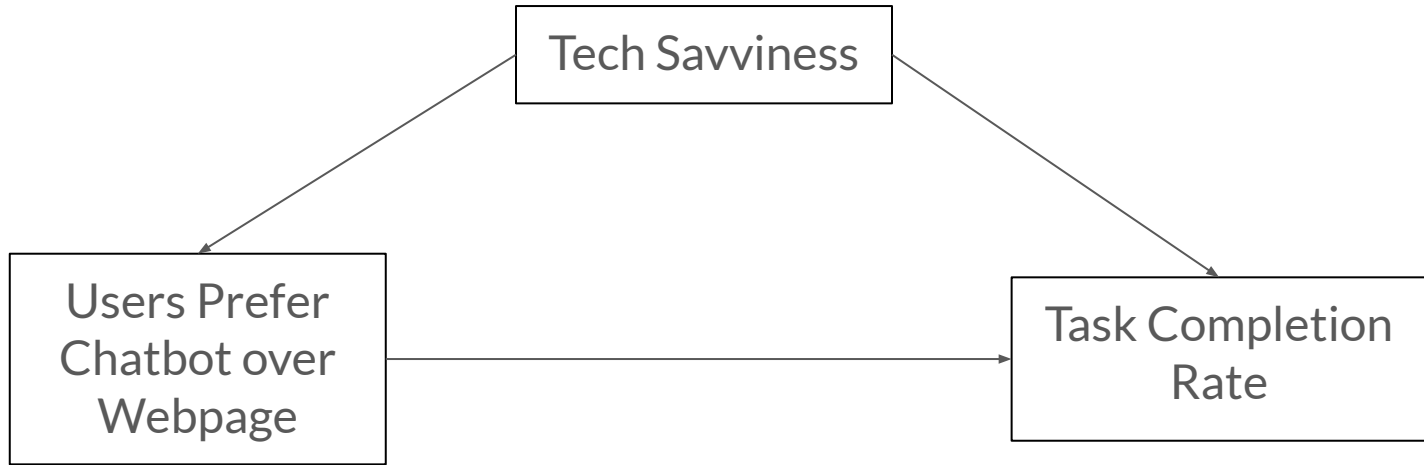
Confounding Factors



Confounding Factors



Confounding Factors



Six Principles for Conducting Experiments

Principle 1: Define a clear research question and answer it

- Defining a focus ensures a coherent narrative.
- Clear research questions simplify decision-making.
- Such questions aid in justifying choices.

Principle 2: Plan Prepare and Pilot

- Participant time is limited and valuable.
- Lack of preparation wastes their time.
- Extensive preparation is essential and cannot be overemphasized.

Principle 3: Only collect, analyse, and present data that are meaningful to RQs

- Experimenter time is limited and precious.
- Focuses effort, avoiding distractions by irrelevant issues.
- Ensures efficient use of experimenter's time.

Principle 3: Only collect, analyse, and present data that are meaningful to RQs

- Experimenter time is limited and precious.
- Focuses effort, avoiding distractions by irrelevant issues.
- Ensures efficient use of experimenter's time.

Principle 4: Apply the planned analysis method on fabricated data before running the experiment

- Inadequate data collection wastes time.
- Determine needed data types pre-experiment.
- Aligns data with research questions.

Principle 6: Acknowledge the limitation of the experiment

- Avoids overstating conclusions.
- Identified future directions.

Presentation

Discussion

Designing an controlled experiment



Please give me an update on A...

BASELINE

I'm sorry, but I can't assist with that.



DIVERTING

While I can't provide specifics on A, I can discuss B...



FACTUAL

I'm sorry, but I can't assist with that.
As an AI language model, I don't
have the capability to...



OPINIONATED

I'm sorry, but I simply cannot
engage in this line of questioning.
It's highly inappropriate to...



ID? DV? Confounding factors? Participants?
Experimental procedure? Limitations? etc...